

# HPS SERIES DRIVE

PRESSURE, TANK LEVEL, CONTROL... **IT'S IN THERE!**



SPOC Automation, the largest independent artificial lift controls manufacturer in North America, is proud to introduce the HPS Series Drive. After years of continued development and listening to our customers, we can say, "It's in there."

The HPS drive is the industry's best tank level, pressure control, feature-rich surface pumping system drive on the market. By reducing the number of starts and stops, the HPS drive protects against mechanical wear and tear while saving energy costs. Also, controlling your drive has never been easier with the WiseGuy interface that comes standard with every HPS drive. With the intuitive interface, everything you need to control the drive is located on one easy-to-use screen.

We asked our customers what their wish list would be for their horizontal pumps, triplex and other injection/disposal applications. The final result is the HPS Series Drive, which has everything you need to produce more and spend less, and it's all inside the drive for your pumping system.

## TANK LEVEL INPUTS

- Head pressure switches
- Analog pressure transducers
- Ultrasonic sensors
- Radar sensors

## SUCTION / DISCHARGE INPUTS

- Pressure switches
- Analog pressure transducers

## PROVIDE HISTORICAL AND PRODUCTION DATA

- Trending & run history
- Data logging with USB expandable memory
- Midnight custody data transfer
- Single touch USB download to USB memory
- SCADA ready product

## INTUITIVE OPERATOR INTERFACE THAT AIDS TROUBLESHOOTING

- Fault indication
- Vibration switch
- Oil level / Temperature
- High / Low suction
- High / Low discharge
- High / Low tank
- Date & time stamped

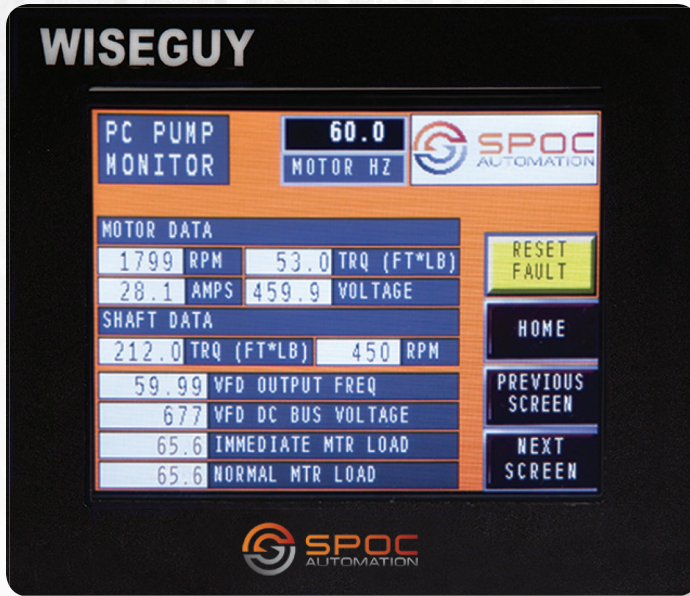
## CONTROL SIGNALS FOR OPTIONAL FEEDS

- Charge pumps
- Booster pumps

## TWO APPLICATIONS FOR SURFACE PUMPING IN ONE DRIVE

- Tank level
- Discharge pressure





The WiseGuy interface allows control of a wide range of features all from one easy-to-use touch screen.

## TECHNICAL DATA SPECIFICATIONS

Common I/O platform throughout all HP ranges	Standard
Transient voltage surge protection and 3% input line reactor	Standard
NEMA type 3R outdoor rated enclosures with sun shields, exhaust heat plenum	Standard
Extreme climate rating from Desert to Arctic conditions	-40°F to 122°F Standard
Output Frequency Range: Hz	0 to 320 Hz Standard
WiseGuy data capture, trending, time and date stamp, history, USB port for download	Optional
Interchangeable and expandable I/O cards	Standard
Communications: ModBus RTU, Ethernet and others	Optional
Open Protocols for your SCADA system and telemetry ready	Optional
Proven, tested products with over 10,000 units	Yes
IEEE519 compliant low harmonic options	Optional
Input voltage	208V, 230V, 480V +10/-20%
Well Insight SCADA Interface	Optional

\*\*\* Other voltages available, please consult SPOC.

## OPTIONAL WISEGUY TOUCHSCREEN INTERFACE

- Easy and intuitive
- On-board datalogging
- USB downloads
- Real-time graphical torque trending

## AVAILABLE SENSORLESS PUMP-OFF CONTROL

- Simple installation
- Reduce speed instead of stopping at pump-off

## AVAILABLE RANGE AND RATINGS

- 3-200HP
- 1 phase or 3 phase service inputs, 3 phase motor outputs
- 208V, 230V or 480V power
- -40F through 122F ambient standard rating
- Low Harmonic Solutions available



30 HP installation shown. The Roto-Armor VFD has highly accurate motor control to carefully regulate applied motor torque, eliminating torque overshoot and its associated problems.

## WELL INSIGHT TELEMETRY

- Web-based monitoring of well conditions
- Alarms and notifications
- Trending of any data
- Cellular or satellite